

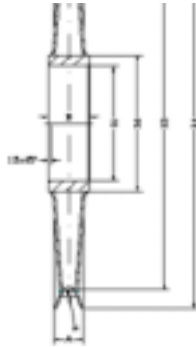
FORJAS IRIZAR®

Sheaves with or without bearings



- Fabricated and welded sheaves
- Standard laminated and forged sheaves

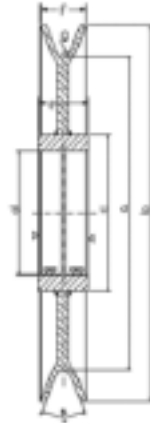
With the option of delivery of sheave assemblies with bearings, including INA (SL,51...).



Useful Information for the Manufacturer:

- * CAPACITY (Ton) of the SHEAVE
- * DIAMETER (mm) of the SHEAVE (D3)
- * ROPE DIAMETER (mm) (R)
- * CENTRAL PART INSIDE DIAMETER (mm) (

"C" FORM SHEAVES (WELDING-MACHINED)		
RANGE OF SIZE CAPACITY	MATERIAL (STEEL)	STANDARD MINIMUM HARDNESS of the ROLLING ROPE
from diam. 450 mm up to 1300 mm (D3)	St- 52.3	180-200 HB



Useful information for the Manufacturer:

- * CAPACITY (Ton) of the SHEAVE
- * DIAMETER (mm) of the SHEAVE (a)
- * DIAMETER (mm) of the ROPE in relation with (g)
- * CENTRAL PART inside DIAMETER (mm) (d)

CENTRAL PART inside DIAMETER (mm) (d)						
Drawing Ref.		Drawing Ref.				
a	see drawing	∅ 160	∅ 200	∅ 280	∅ 355	∅ 450
b	see drawing	∅ 192	∅ 240	∅ 335	∅ 415	∅ 520
c	see drawing	∅ 95	∅ 109	∅ 140	∅ 186	∅ 220
d	see drawing	∅ 75	∅ 85	∅ 110	∅ 150	∅ 180
e	see drawing	35	41	48	60	72
f	see drawing	30	33	44	48	60
g	see drawing	4	5,5	8	9	12
	bearing	6009-2RS	6209-2RS	6212-2RS	6217-2RS	6220-2RS
	bearing inside ∅	∅ 45	∅ 45	∅ 60	∅ 85	∅ 100